



## Six tips to make the perfect Video VBOX scene

In this 'how to' article, we give you some tips on how to use the Video VBOX set-up software to easily create the ideal scene for your application, whether you are using Video VBOX for automotive testing or motorsport.



Covering camera angles, graphic overlay layout, picture in picture positions, and the best colours to use for maximum effect, the article will help you make the best possible scene, and avoid some of the pitfalls.

### 1. Camera Position

We are sometimes asked what the ideal camera position is to get the best video. Aside from the obvious need to make sure that the camera is facing up the right way, (we have seen upside down videos in the past!) this really depends on what you want to capture.

For motorsport and automotive testing, we would recommend one camera high up on the windscreen pointing straight ahead, and the other facing back into the cockpit, at the driver.

It is also possible to mount cameras outside the car using optional strong sucker mounts. This is useful for filming tyre behaviour, for example in the rally testing video to the right, courtesy of Protech Developments Australia.





## 2. Camera Angle

The Racelogic specified HQ-1 cameras supplied with Video VBOX have a fairly wide angle lens, which means that they will include most of the action from a variety of positions. However, this can sometimes lead to large areas of redundant sky in the shot, especially if the camera is angled too high.



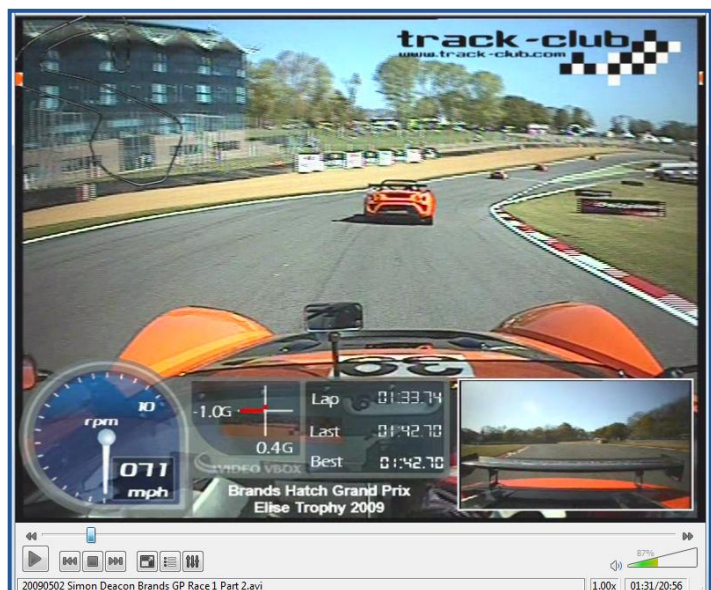
The best answer to is to angle the camera down so that a smaller amount of sky is shown in the picture (you can use a Mini Preview Monitor, left, or a connected Laptop to check this). This will then give you a large area of bonnet, a space which you can use to position your dials. As most of the image will then be centred on the road, it can have the added benefit of making it look like you are going faster!

## 3. Picture-in-picture

The picture in picture should be placed over any area of 'dead' space you can find in your frame, where there is no interesting dynamic movement.

The scene above (courtesy of Track Club, at Brands Hatch) is perfect, except for the fact that the picture in picture obscures the view of the steering wheel. If it had been swapped with the transparent dials and positioned on the left of the screen instead the scene would have been more effective.

Which brings us to dials and elements...





## 4. Dials

Dials and other elements should be kept as simple as possible, to make the readings clear, and to stop your scene looking cluttered. If you are designing your own elements, try to keep the font size above 16pt for easy viewing.

If you use transparent dials, as shown in the lotus video above, it enables you to see the video underneath, whilst still being able to view measurements from the active part of the graphic.



This is especially useful for automotive testing and vehicle dynamics applications, where you may need to display a large number of parameters, or incorporate large graphics for clear feedback.

For more help on creating elements, look at our gauge creation tutorial [here](#).



## 5. Colours

The video to the left (courtesy of Everyman Driving Experiences in the new Focus RS at Prestwold Circuit, UK) looks really good.

However, the track map at the top of the screen is white. Against the cloudy sky, there is not enough contrast to be able to see it properly, so you can only see the red dot of the car moving around it.

Mike Broadbent, Sales Manager at Racelogic and regular participant at track days with his Honda RRY Fireblade, uses a bright circuit overlay to make it visible in all weather conditions.

(To the right is a video of Mike crashing on said Fireblade.)



## 6. Keep it simple!

The most effective videos we have seen keep things clear and simple, so that instead of distracting the viewer, your overlay will really enhance the video.

To help, our latest version of Video VBOX Set-up software increases the number of sample scenes available, meaning that you have more choice on graphic layout and elements.

Further information on creating your own Video VBOX scenes is available on page 38 of the user manual, [here](#). If you need any further help, we'd be happy to assist at [support@racelogic.co.uk](mailto:support@racelogic.co.uk)