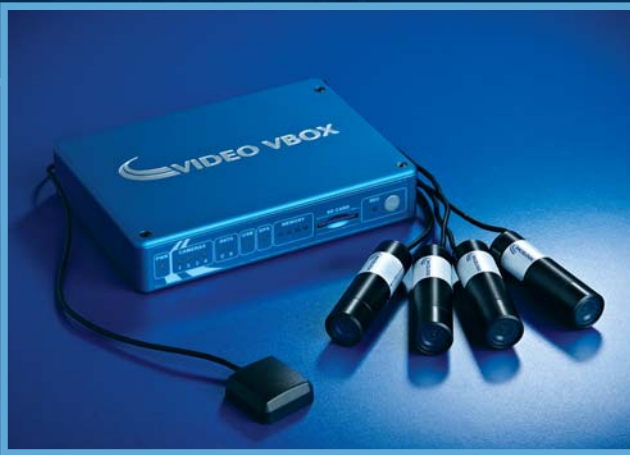


# VIDEO VBOX

By RACELOGIC



STATE OF THE ART  
ON-BOARD VIDEO  
& DATA-LOGGING

## WHAT IS VIDEO VBOX?

**VIDEO VBOX** is one of the most advanced in-car video systems on the market. It combines a reliable, high quality, solid state multi-camera video recorder with a GPS data-logger and a real-time high resolution graphics overlay engine, all housed in a single, rugged package. There are two versions...



VIDEO VBOX PRO.



VIDEO VBOX LITE.

## VIDEO VBOX PRO

**VIDEO VBOX PRO** is a no-compromise system for motor-sport professionals, racing drivers, automotive engineers, race schools, and PR companies. It offers a host of features in a rugged, aluminium enclosure with motorsport grade LEMO connectors. **VIDEO VBOX PRO** is available with 10Hz or 20Hz GPS logging, and can record video from up to four bullet cameras.

## VIDEO VBOX LITE

**VIDEO VBOX LITE** is designed to provide many of the high-end features of the Pro system, but at a lower price. Housed in a rugged plastic enclosure with strong, locking connectors, the unit is small and light. Like **VIDEO VBOX PRO**, there are no special mounting requirements, so the box can be placed anywhere convenient.



**VIDEO VBOX PRO** is used by every car in the Australian GT Series.



**VIDEO VBOX** used at the launch of the Lexus LFA supercar at Goodwood Circuit.

## WHAT ARE THE DIFFERENCES BETWEEN VIDEO VBOX PRO & VIDEO VBOX LITE?

	VIDEO VBOX LITE	VIDEO VBOX PRO
<b>GPS ENGINE</b>	10Hz	10Hz or 20Hz
<b>CAMERA INPUTS</b>	2	4
<b>CAMERAS</b>	One high resolution, one low resolution	All high resolution
<b>CAN LOGGING</b>	1 (standard), 2, or 4 channels	1 (standard), 4 or 32 channels
<b>CONNECTORS</b>	Locking Mini Din	LEMO
<b>STORAGE</b>	SD Card / USB Flash Drive	SD Card / USB Flash Drive / Hard Drive
<b>REMOTE START / STOP</b>	Yes	Yes
<b>HOUSING</b>	ABS Plastic	Anodised Aluminium
<b>FLIGHT CASE</b>	No	Yes
<b>SIZE</b>	130 x 122 x 37 mm (5.1 x 4.8 x 1.5 inches)	170 x 122 x 33 mm (6.7 x 4.8 x 1.3 inches)
<b>WEIGHT</b>	267 g (0.58 lb)	700 g (1.54 lb)

# WHY VIDEO VBOX?

## EASY TO USE

Fitting **VIDEO VBOX** is very easy. Simply place the magnetic GPS antenna on the roof of your car, plug the system into your cigar lighter socket, wait 60s to get GPS lock, and you are ready to go! The video starts recording the moment you start to drive, and stops when you come to a halt, so you don't even need to remember to switch it on or off.



## RELIABLE

The recording adapts to the quality of your media, making it tolerant to different makes of SD/USB storage. Also, **VIDEO VBOX** is the only system with a built-in 'tank circuit' which protects your video during power drop outs such as engine cranking.



The screenshot displays the Circuit Tools software interface. At the top, there are menu options: Home, Session, Graph, Video, Track, G-G Plot, and Data. Below the menu is a toolbar with icons for various functions and a font settings panel. The main area is divided into three sections:

- Top Left:** A table showing lap data for 'VBOX0001.vbo'. The table has columns for Lap, Time, Delta, VMax, and Datum.
- Top Right:** Two side-by-side video feeds showing a first-person view from a race car. The feeds include a speedometer and a 'VIDEO VBOX' logo.
- Bottom:** A graph showing 'Speed (mph)' and 'Delta-T (s)' over 'Distance (m)'. The speed graph shows two lines representing different laps, and the Delta-T graph shows the time difference between them.

Show	Lap	Time	Delta	VMax	Datum
<input type="checkbox"/>	01	02:01.85	+01:48.64	70.97	
<input type="checkbox"/>	02	01:17.61	+04.89	105.91	
<input type="checkbox"/>	03	01:16.27	+03.05	106.57	
<input type="checkbox"/>	04	01:13.12	-00.09	107.81	
<input type="checkbox"/>	05	01:12.68	-00.53	107.34	
<input type="checkbox"/>	06	01:12.76	-00.45	107.36	
<input type="checkbox"/>	07	01:13.13	-00.08	106.46	
<input type="checkbox"/>	08	01:13.89	+00.87	105.33	
<input checked="" type="checkbox"/>	09	01:14.03	+00.80	105.07	
<input type="checkbox"/>	10	01:13.22	00.00	105.94	
<input type="checkbox"/>	100	01:31.42	+18.20	97.88	
<input type="checkbox"/>	101	01:38.15	+22.93	72.80	
<input type="checkbox"/>	102	01:37.02	+23.80	74.15	
<input type="checkbox"/>	103	01:36.29	+26.06	72.75	
<input type="checkbox"/>	104	01:28.10	+12.88	101.80	
<input type="checkbox"/>	Ideal	01:12.42	-00.79	-	
<input type="checkbox"/>	Fastest	01:12.42	-00.79	106.95	

Show	Channel	VBOX0001.vbo	VBOX0001.vbo
	(Current)	Lap 09	Lap 10
<input checked="" type="checkbox"/>	Speed (mph)	100.55	98.64
<input type="checkbox"/>	Lateral (g)	0.00	0.00
<input type="checkbox"/>	Longitud (g)	0.00	0.00
<input type="checkbox"/>	Combined G (g)	0.00	0.00
<input checked="" type="checkbox"/>	Delta-T (s)	0.01	0.00
<input type="checkbox"/>	Sets	5	5
<input type="checkbox"/>	LTC Time (s)	15:07:55.00	15:07:55.00
<input type="checkbox"/>	Latitude	52°47'59.91	52°47'59.91
<input type="checkbox"/>	Longitude	0°10'55.91	0°10'55.91
<input type="checkbox"/>	Heading (°)	35.5	35.5
<input type="checkbox"/>	Height (m)	199.43	199.43
<input type="checkbox"/>	Vertical vel (mph)	0.00	0.00
<input type="checkbox"/>	Distance (m)	0.00	0.00
<input type="checkbox"/>	Elapsed time (s)	0.00	0.00

It's easy to analyse your driving and improve your lap-times with the powerful **CIRCUIT TOOLS** Software, included with **VIDEO VBOX**.

## HIGHLY RATED DRIVER TRAINING SOFTWARE

**CIRCUIT TOOLS** takes your data and automatically detects the circuit using our large database. It ties this in with a start/finish line to separate your laps. In seconds, you can compare two laps using the combined video and data to see precisely where time is being lost or gained.

## FREE SUPPORT

Should you need it, every **VIDEO VBOX** comes with a one year hardware guarantee and lifetime software support. You have the peace of mind that should you ever want advice, the full **RACELOGIC** support team is on hand by phone or email to assist. Free training sessions are also available.

# WHAT CAN I DO WITH VIDEO VBOX?

## GPS DATA-LOGGING

**VIDEO VBOX** gives you speed, time, distance, acceleration, lap-timing, and track position, using the same GPS technology from **RACELOGIC'S** acclaimed **VBOX** range. It provides highly accurate GPS data at 10Hz or 20Hz.



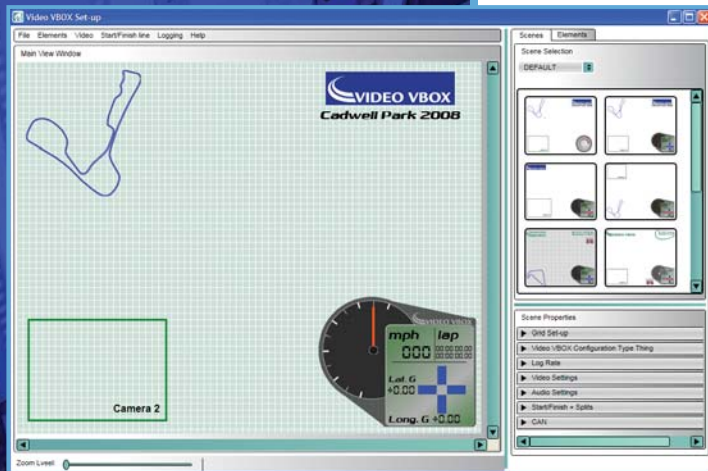
High accuracy GPS.

## MULTI-CAMERA VIDEO

**VIDEO VBOX LITE** takes up to two bullet cameras, while **VIDEO VBOX PRO** can take up to four. The size and position of each view is customisable. Stereo sound is recorded from two microphones (included).



The included bullet cameras can be mounted anywhere in the vehicle.



Choose how you want to display the embedded graphics with **VIDEO VBOX** Setup Software.

## CUSTOMISABLE GRAPHIC OVERLAY

As the GPS data can be overlaid on the video, you can instantly analyse and compare your driving without having to learn complex analysis software. Every aspect has been designed to maximise the quality of the video and graphics, and the layout and content are totally customisable. Choose from a number of dashboard styles or create your own.



## VEHICLE DATA-LOGGING

With **VIDEO VBOX** you can integrate information such as RPM and throttle angle with your video. If your vehicle has a CAN Bus, you can log real time information directly without additional modules. **RACELOGIC** has a large CAN database for a wide range of vehicles. For vehicles without CAN, you can use a **MICRO INPUT MODULE** or **MINI INPUT MODULE** which allow you to use external sensors.



## PREDICTIVE LAP-TIMING

Predictive Lap-timing gives you instant feedback on driving technique. It takes your previous best lap and makes a continuous comparison against your current lap, giving you real time feedback on the time being gained or lost. It works by using GPS position to keep the predicted time accurate whatever driving line you take and even works at very long tracks such as the Nurburgring. This feature is available on all **OLED DISPLAYS** which are compatible with the **VIDEO VBOX LITE** and **PRO** systems.



Instant accurate feedback with LineSnap Predictive Lap-timing, shown with the DSP04 aluminium OLED Display.

# PERIPHERALS

## DATA-LOGGING EXTERNAL SENSORS

### MICRO INPUT MODULE

The **MICRO INPUT MODULE** is designed to interface four analogue inputs, and an RPM signal with the **VIDEO VBOX** with a resolution of 10 bits.

### MINI INPUT MODULE

The **MINI INPUT MODULE** is designed to interface eight analogue inputs, an RPM signal, a wheel-speed input, two thermocouple inputs and a digital input with a resolution of 14 bits.



MICRO INPUT MODULE.



MINI INPUT MODULE.

## DISPLAYS

### OLED DISPLAY

Can be used to display lap-times, split times, speed, g-force and LineSnap predictive lap-times. It's configurable, and easily viewable in sunlight. There are two versions of the **OLED**, which are compatible with both **VIDEO VBOX PRO** and **VIDEO VBOX LITE**.



Splash proof DSP05 **OLED DISPLAY** with aluminium and ABS plastic construction.



Waterproof DSP04 **OLED DISPLAY** with anodised aluminium construction.

### MINI PREVIEW MONITOR

Designed to help you align and check your camera views, the **MINI PREVIEW MONITOR** is useful if you regularly take your **VIDEO VBOX** in and out of your vehicle.



## MOUNTING

**VIDEO VBOX** comes with strong sucker mounts for your cameras. However roll cage mounts are also available. The **VIDEO VBOX** units themselves can be stored anywhere – a common location is inside a glove compartment or under a seat.



The optional roll cage mount.



Strong windscreen sucker mounts are included as standard.

## POWER

**VIDEO VBOX** comes with a cigar lighter cable. However if your vehicle does not have reliable power, our battery pack will power a **VIDEO VBOX** with two cameras for over 5 hours, and re-charges in under 3.



## WHO USES VIDEO VBOX?

- Professional Racing Drivers
- Racing Series (e.g. the Australian GT Series)
- Driver and race training schools and experiences (e.g. BMW, Silverstone, V8 Race)
- Amateur Racers
- Track day enthusiasts
- Vehicle Manufacturers and testing engineers (e.g. Jaguar Land Rover, Porsche, Lexus)
- PR Agencies, Magazines, TV Shows (e.g. EVO Magazine, The Speed Channel, Top Gear)

# VIDEO VBOX

By RACELOGIC



**HOW TO BUY VIDEO VBOX**

**[www.VideoVBOX.co.uk](http://www.VideoVBOX.co.uk)**

**[vbox@racelogic.co.uk](mailto:vbox@racelogic.co.uk)**

**+44 (0)1280 823803**

Exclusively designed and built in the UK by **RACELOGIC**, experts in Video and GPS Data-logging for vehicle testing and motorsport.