

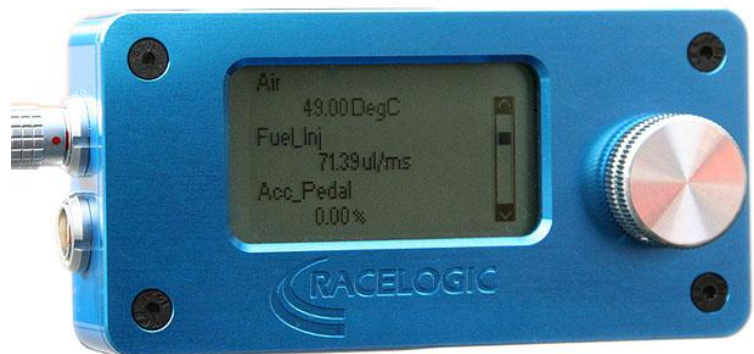
CAN Bus Display

(RLCANDSP02)



The Racelogic CAN Display is a versatile tool for display of real-time CAN Data. Aimed at both test engineers and network engineers, the CAN Display is capable of displaying raw CAN frames and individual CAN signals from a CAN database.

The PC software supplied with the CAN Display allows the user to read and download up to 64 signals from their own industry standard DBC format database.



In addition to this, the CAN Display has a built-in vehicle database, giving access to common signals available on most makes of passenger car.

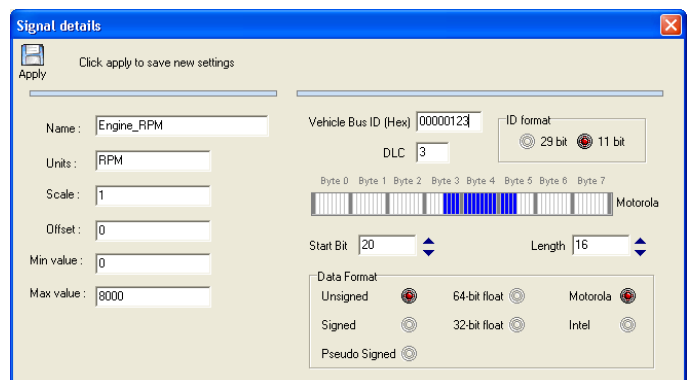
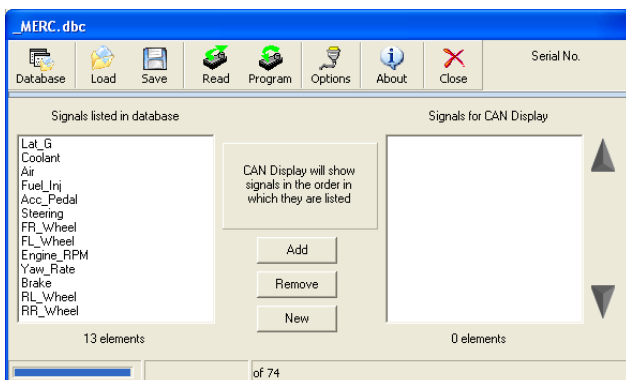
The CAN Display is also equipped with a user programmable analogue output. This can be used to convert signals from either the built-in database or the users own CAN database into an analogue voltage for use by other equipment.

Features

- Compact size
- Simple graphical interface
- Use standard DBC database files
- Display Raw CAN data or database signals
- Automatically detect CAN bit/s
- Scan CAN Bus and list all identifiers
- User configurable analogue output
- Ability to load CAN REF files (only DSP2 units)

Software

The software supplied with the CAN Display allows the user to import their own DBC file data and select up to 64 signal channels which can be downloaded to the CAN Display. By clicking on each signal, it is possible to display and edit the signal settings before they are downloaded to the display.



CAN Bus Display

(RLCANDSP02)



Example display formats

IDENTIFIER	4 of 23
0x02104136x	500.0k
DATA	
BB02 3F FF 26 E0 1C 6F	

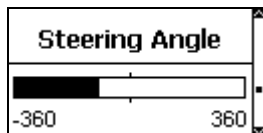
Raw CAN data. Identifier list is built by scanning the CAN Bus before allowing the user to scroll through each CAN frame.

Air_Temp	50.0 Deg C
FuelFlow	500ml/s
Acc_Pedal	47.5%

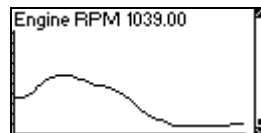
Data from users own database. Multi signal view. Three signals are displayed at once in a scrollable real-time list.

RPM
862.00
(No units)

Data from users own database. Single signal view. Rotating the adjuster will switch between each DBC signal.



Data from users own database. Bar graph view. Graph limits are taken from DBC file.



Data from users own database. Graphical view. Graph limits are taken from DBC file. Scroll rate of graph is user adjustable.

Specification

Data link	CAN ISO 11898, 10Kbit/s to 1Mbit/s
Size	100mm x 50mm x 25mm / 3.9" x 1.9" x .98" (WxHxD)
Weight	100g / 3.5oz
LCD Display	128 x 64 pixel, Green LED backlight
Operating temperature	-20 to 50 °C
Operating Voltage Range	6v to 28v DC
Power	Approx 0.5w
Database	Standard CAN DBC format
Built-in database	Most passenger car makes supported. Typical signals where available include Engine RPM, Wheel speed, Throttle angle and steering angle

Package Contents

Description	Product Code
CAN Bus Display (File Manager)	VBFMAN
Connecting Cable – 5pin LEMO to 9pin Sub-D Female (3m)	RLVBCAB34
RS232 cable for PC connection	RLCAB001
CD with PC DBC downloader software	
User Guide	

Option components

Description	Product Code
Windscreen suction mounting with adapter plate	
9pin Sub-D Male to OBD-II connector	RLVBCAB20
Analogue output cable to BNC	RLVBCAB35
Wire piercing probe cable	RLVBCAB36