

Racelogic Q1 Display System



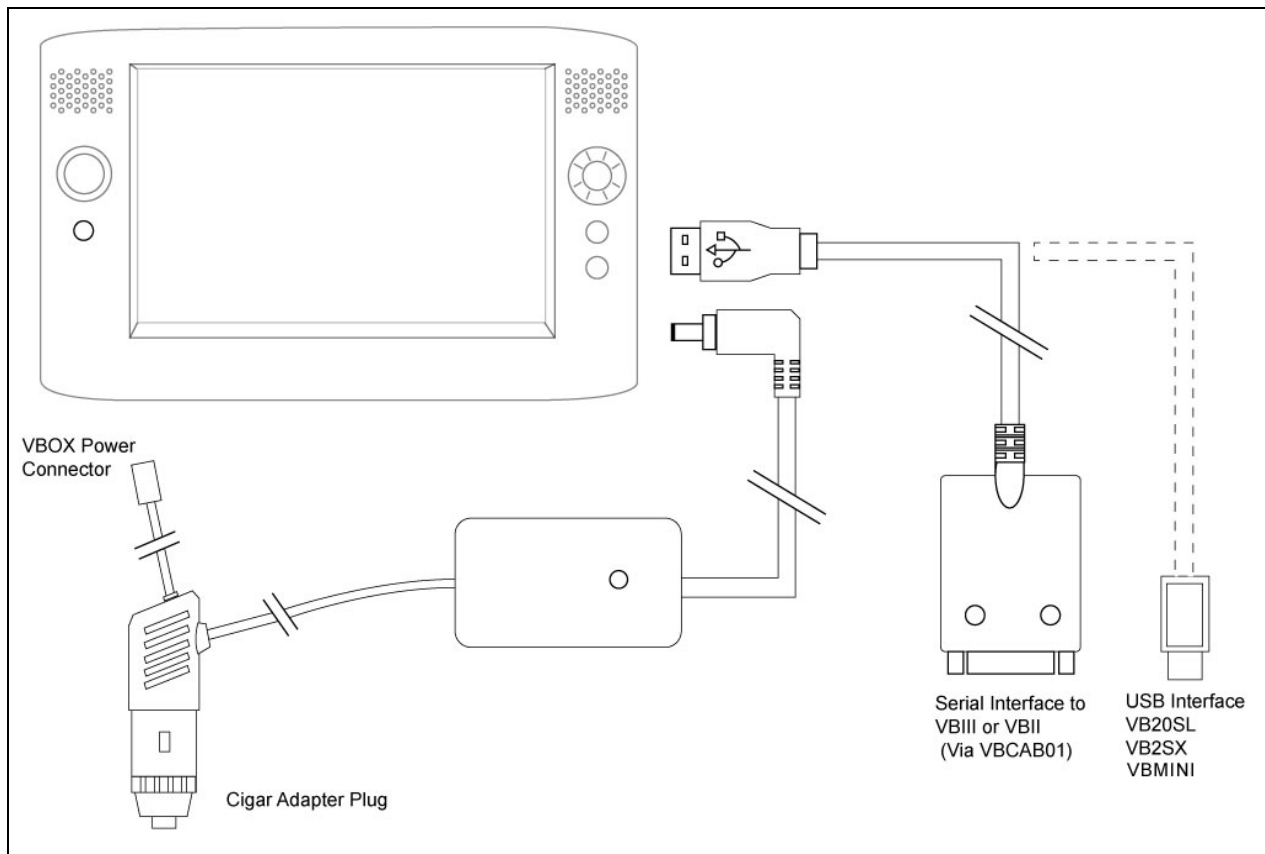
User Guide

Congratulations on your purchase of a Racelogic Q1 Display system.

Please ensure that all contents are present by referring to the documentation found within the Q1 packaging.

Connections

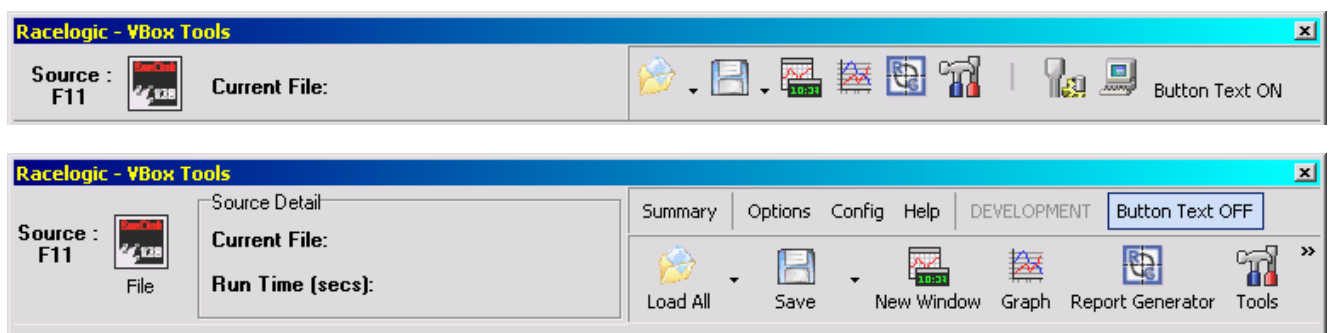
The Racelogic equipment consists of a USB to Serial cable to allow connection from your VBOX to the Q1, and a two way lemo for connection to an in-car cigar lighter power supply to both the Q1 and VBOX. Please see the connection diagram below:



Please note that if you intend to use this equipment with either a VBOX Mini or VBOXIISX then you will need to connect the Q1 with the USB cable supplied with the VBOX.

VBOX Tools

The Q1 Display System is preloaded with a tablet pc specific version of VBOX Tools. There is no compromise on software functionality, and every feature is still included. However in order to maximise the amount of space on the screen the software has been adapted and now features a "Button Text Off/On" option:



By clicking on this option you can choose to display the button text (the only display option in standard VBOX Tools), or to view the icons only.

Mounting Cradle

Your Q1 also comes equipped with a windscreen mounting cradle. The PC must be clipped in correctly, with the narrower of the two supports at the top. This enables access to the Q1's power switch and Compact Flash card slot.

The mounting cradle can be directly attached to a vehicle windscreen by using the suction cup. Place the cup against the surface of the screen and operate the lever – the mount will now be secure. This suction cup is unlikely to be suitable for attachment to a dashboard due to the slightly uneven surface.

Specification

Pre-delivery testing requires the VBOX Q1 Display System to be shipped to you with the language configuration in English. Should you wish to use any other language option you will need to make the necessary changes to the regional settings within the installed Microsoft operating system.

Q1 Tablet PC

Processor	Intel® Celeron™ M ULV (900MHz)
Chipset and Graphics	915 GMS Internal GFX
Memory	1 SODIMM Socket, DDRII 400, 512MB
PCB	10L Build up PCB
LCD	7" WVGA, 800 x 480
Audio	H/P out, Array Mic, Stereo Speaker, (2W x 2)
Storage	8mm, 1.8" SFF HDD, 40GB
Communications	10/100 Ethernet, Mini card WLAN (802.11 b/g, a/b/g), Bluetooth
Multimedia	Multimedia Instant On (AVS Now), DMB (KOR)
I/O Port	H/P out, DC-in, CF Card slot (Type 2), RJ45, USB x 2, VGA, Power conn for ODD
User Interface	Button : 8 Way Stick, 4 User Key, 3 button (Auto Scale / Select / Menu), Hold , Volume Up/Down, Power/MIO, CAD
Battery	Standard Battery : over 3.5Hrs (Battery Mark), DVD Play: over 1:40
Dimensions	227.5 x 139.5 x 24.5~26.5 mm
Weight	779g (w/o ODD)

Cables

VBOX to Q1	RS232 9-way D-type to USB (for use with VBLite, VBIIIDCF, VBIIIS, VBIII)
	USB to USB (as supplied and for use with VB2SX & VBMini)
Power Supply	+12V Cigar lighter connected to Q1 DC input Secondary Lemo to connect +12V to VBOX

Cradle

Q1 Display Cradle	Quick-release double sided, with windscreen suction mount.
-------------------	--