

VBOX File Processor

- Interruption Plugin -



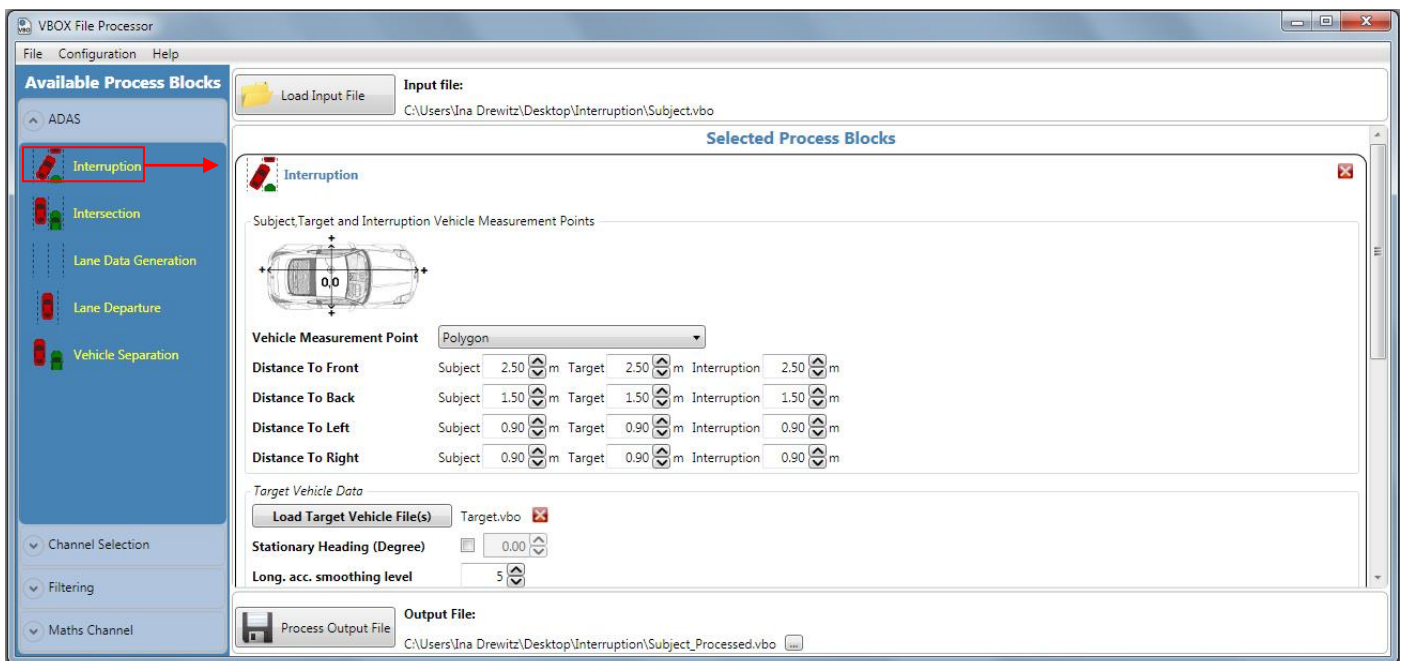
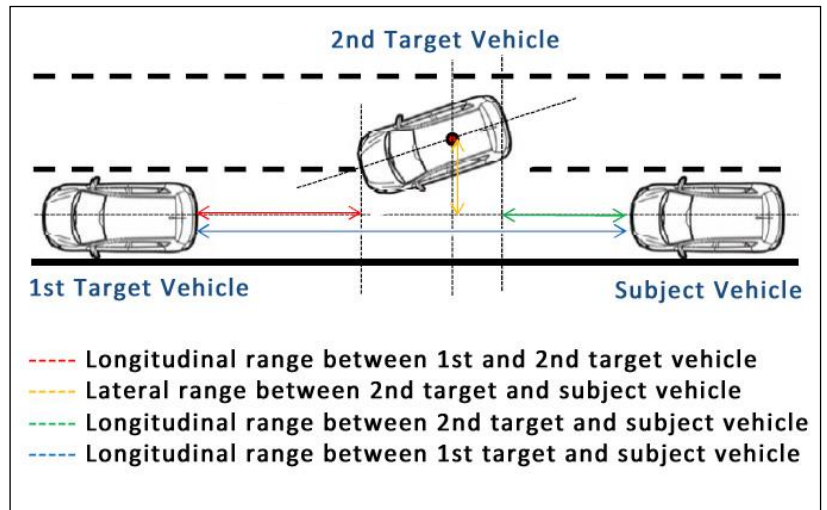
VBOX File Processor Interruption plugin allows you to generate vehicle separation data between three vehicles (subject vehicle, target vehicle and interruption vehicle).

Interruption calculations can be mixed with existing VBOX File Processor functions such as filtering, renaming, smoothing, synchronising or math channel generation.

The customised separation data can be output in KML, VBO and CSV file format for use in VBOX Tools or other data analysis software.

How does it work?

Simply drag and drop the Interruption process block from the ADAS menu into the working area and load the VBOX files recorded during the test manoeuvre. Set the subject vehicle's dimensions, customise channel parameters, and create the output file you need.



Screenshot 1: VBOX File Processor - Interruption process block loaded into working area

Features

- Calculates and processes vehicle separation data
- Fully configurable calculation modes
- Exports to VBO, CSV, KML
- Filtering and smoothing
- Standard and custom math channels
- Batch processing of VBO files
- Data preview within the software

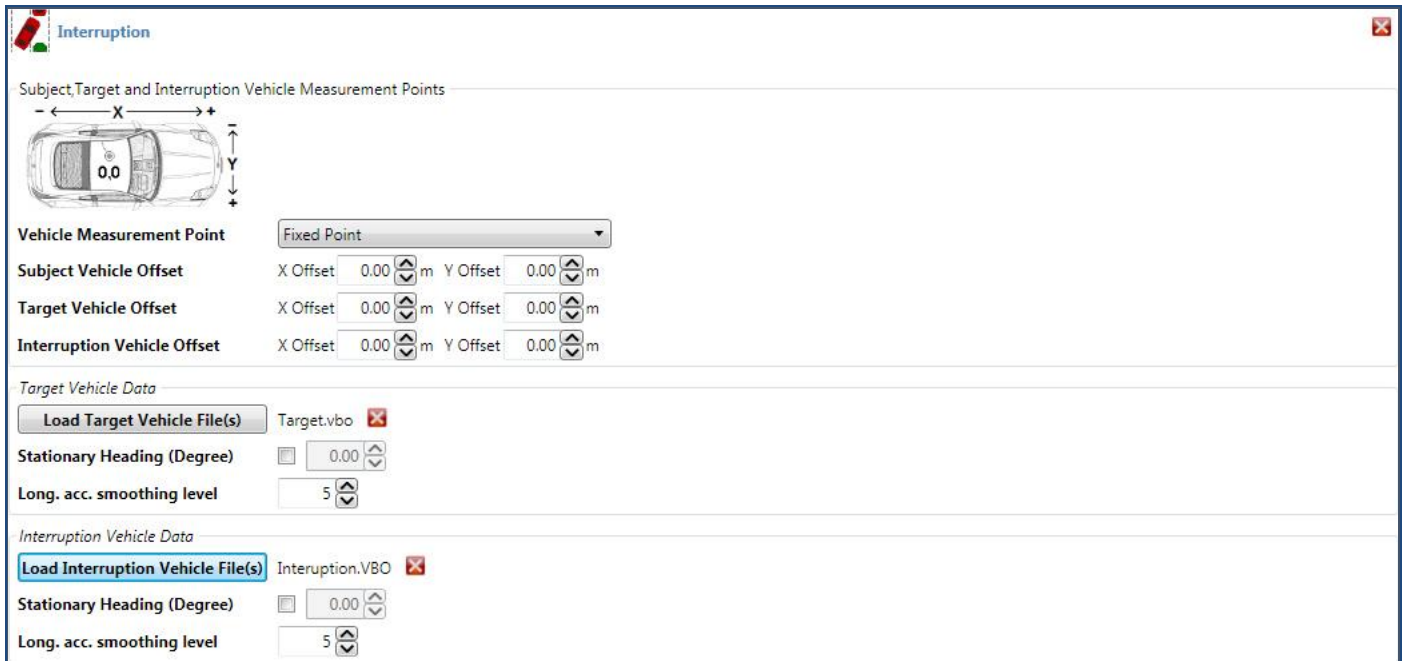
VBOX File Processor

- Interruption Plugin -

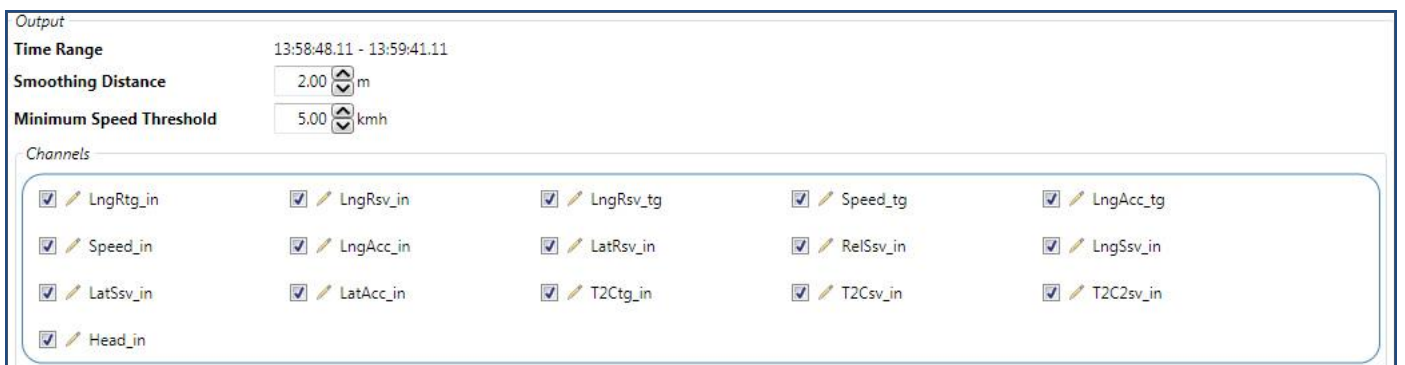


Channel configuration options

The VBOX Interruption plugin allows you to configure how distances between the subject vehicle and target vehicles are calculated.



Screenshot 1: A vehicle can be referenced by fixed points or a polygon.



Screenshot 2: Channels can be deselected if looking for a specific set of outputs, and smoothing distance/speed threshold can be set.