

VBOX File Processor

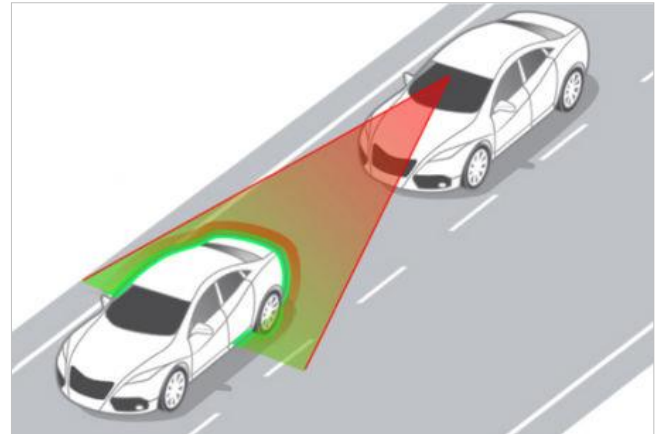
- Vehicle Separation -



The **VBOX File Processor Vehicle Separation** plugin allows you to generate vehicle separation data between two vehicles.

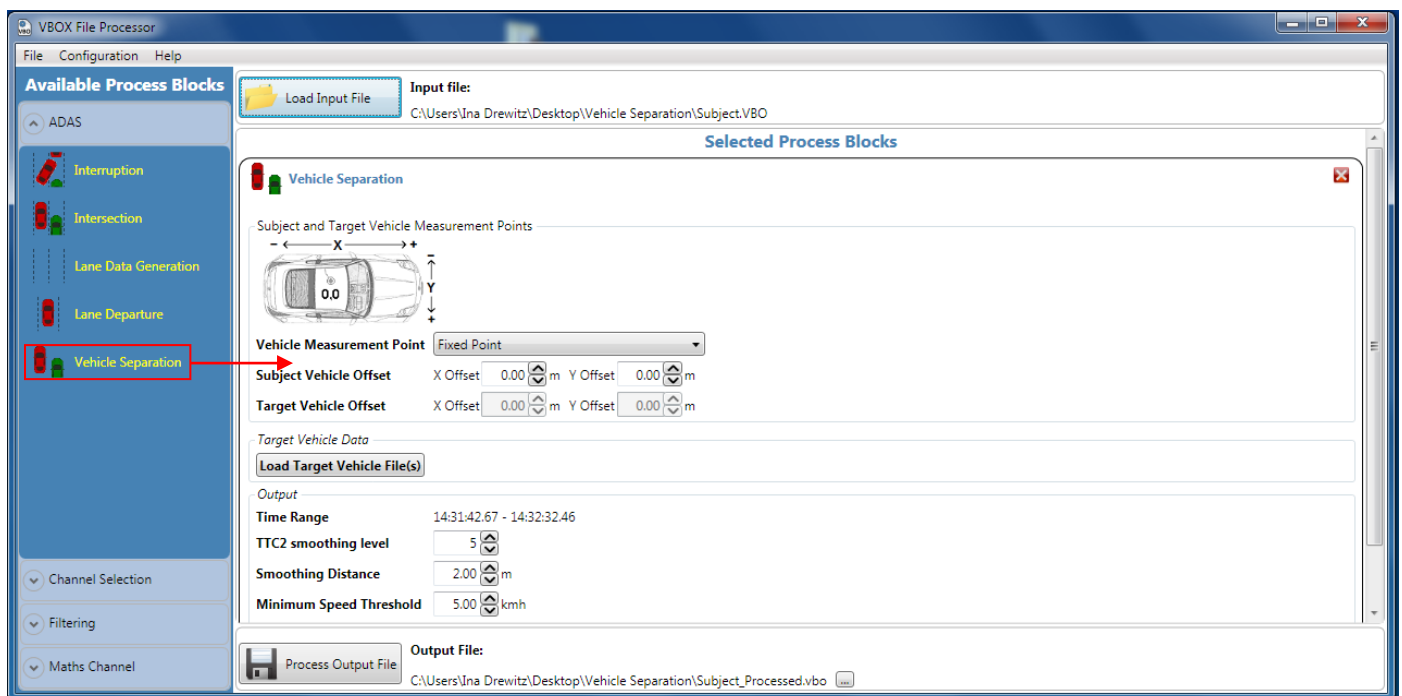
Separation calculations can be mixed with existing VBOX File Processor plugin functions such as filtering, renaming, smoothing, synchronising or math channel generation.

The customised lane departure and vehicle separation data can be output in KML, VBO and CSV file format for use in VBOX Tools or other data analysis software.



How does it work?

Simply drag and drop the Vehicle Separation process block from the ADAS menu into the working area and load the VBOX file recorded in the subject vehicle during the test manoeuvre. Add the target vehicle data, configure calculation parameters and channels, and create the output file.



Screenshot 1: VBOX File Processor – Vehicle Separation plugin loaded in working area.

Features

- Calculates and processes vehicle separation data
- Fully configurable calculation channels
- Filtering and smoothing
- Exports to VBO, CSV, KML
- Standard and custom math channels
- Batch processing of VBO files
- Data preview within the software

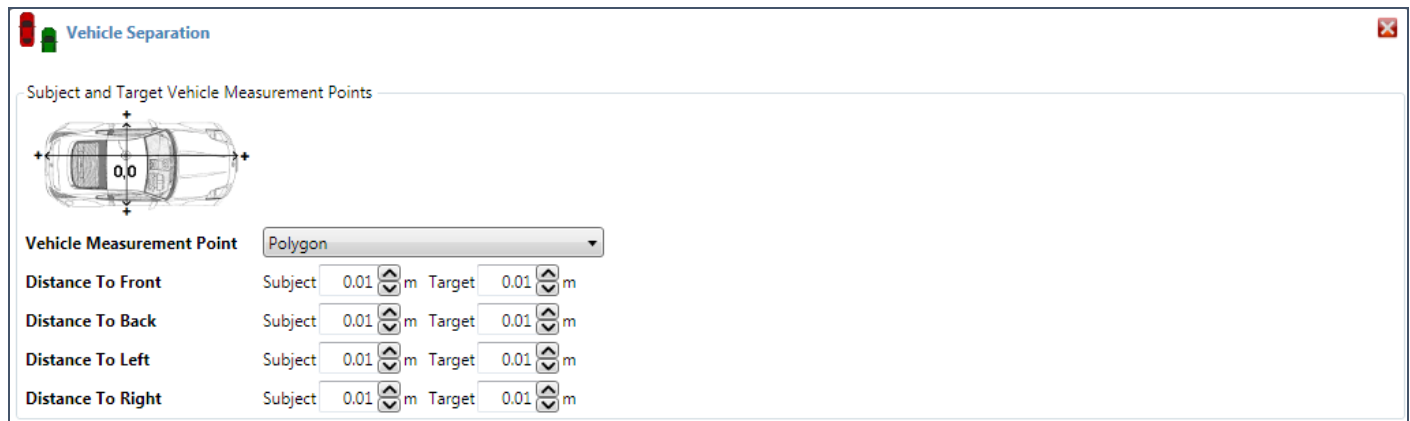
VBOX File Processor

- Vehicle Separation -

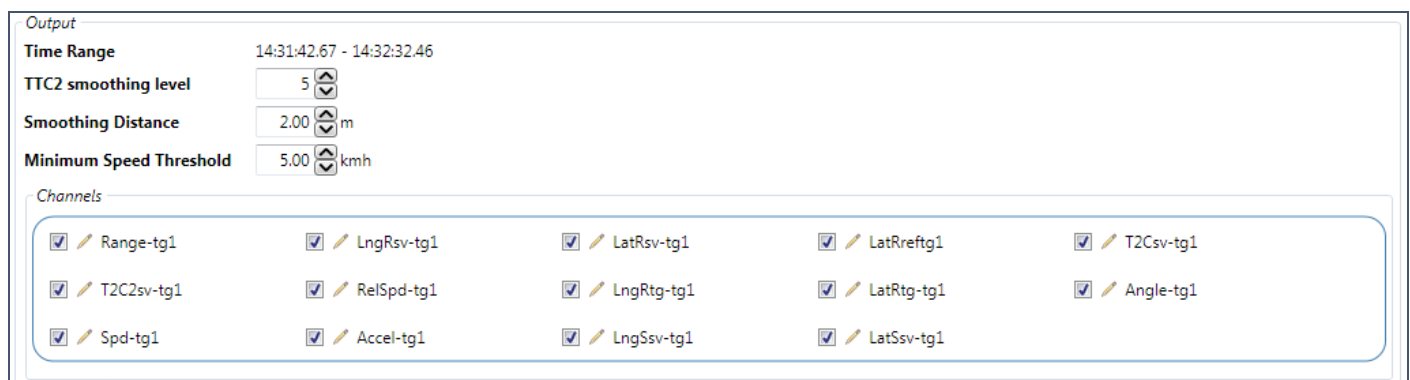


Channel configuration options

The VBOX Vehicle Separation plugin allows you to configure how distances between the subject vehicle and target vehicles are calculated.



Screenshot 1: A vehicle can be referenced by fixed points or a polygon.



Screenshot 2: Channels can be deselected if looking for a specific set of outputs, and smoothing distance/speed threshold can be set.

Configurations and calculation sequences can be saved and applied to other files.

Other ADAS Plugins

- Lane Departure
- Intersection
- Interruption
- Vehicle Interruption