



# Landing Page

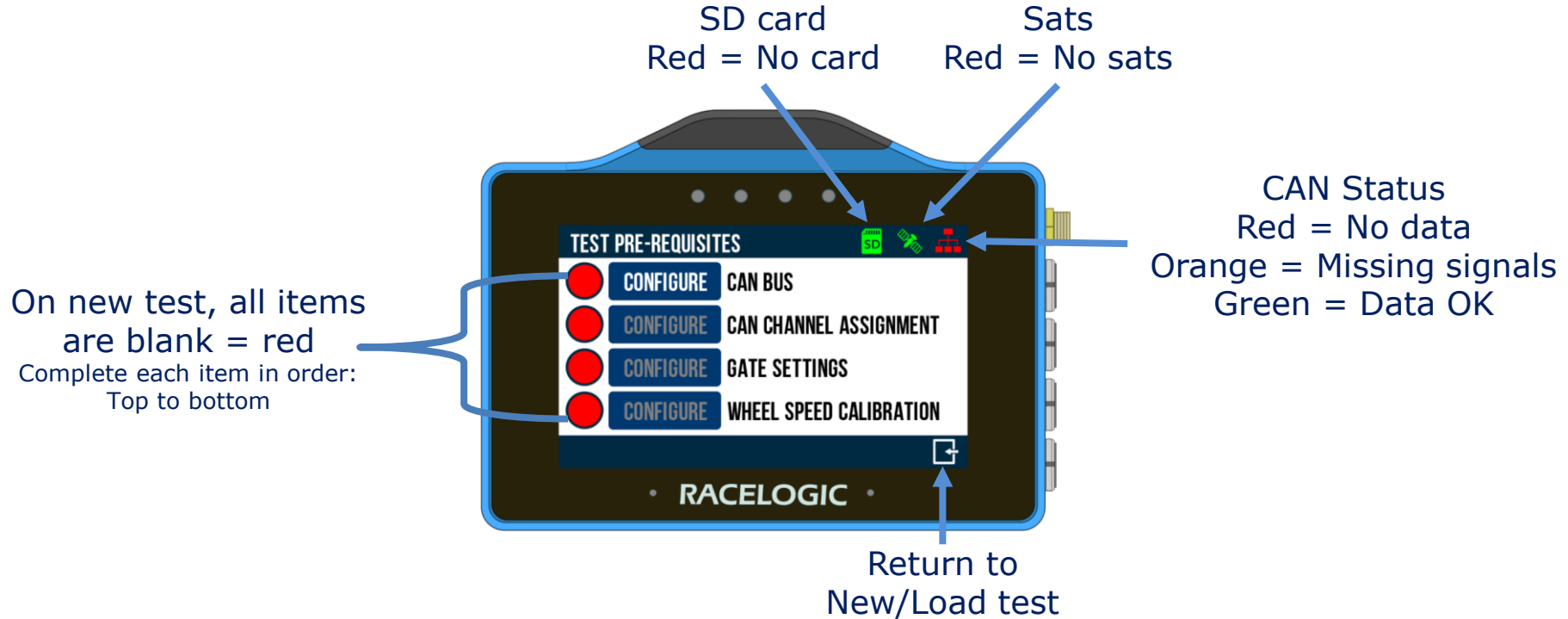
Start new test  
(Clears any existing data)



Load from \'.RLS\' on SD card

Configure test with SD card inserted, settings will be autosaved and automatically load on power cycle

# Test Pre-Requisites (New test)



# Configure CAN (Either 5-way LEMO port)



CAN mode  
'Input'  
Configure  
'From internal'



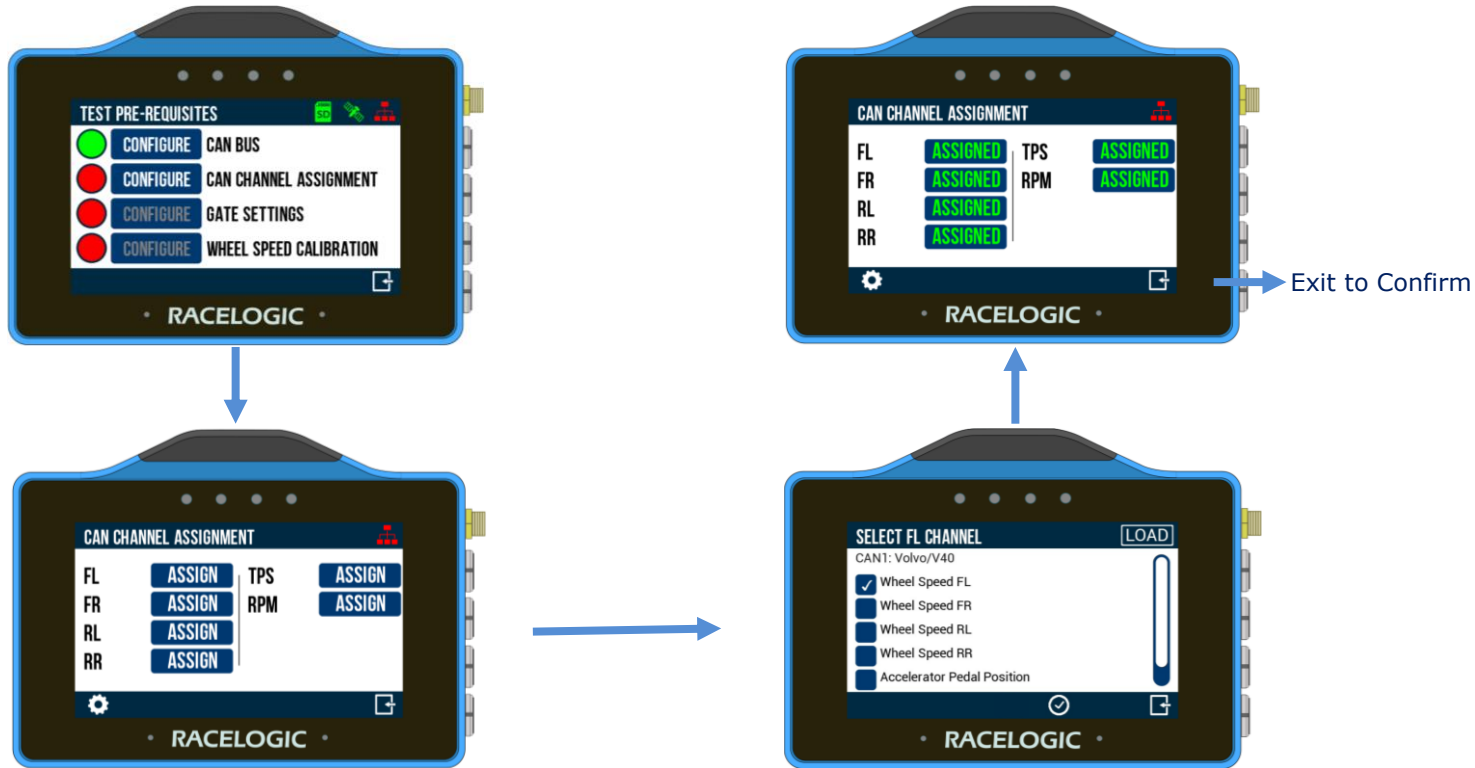
Similar method 'from SD Card' with DBC file



Confirm

Select channels or  
double tap to select all

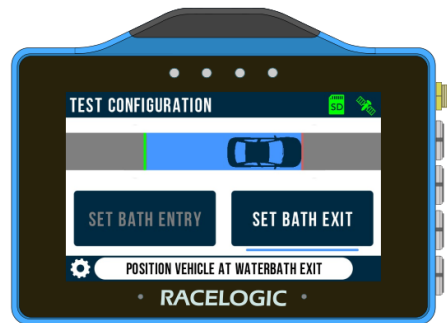
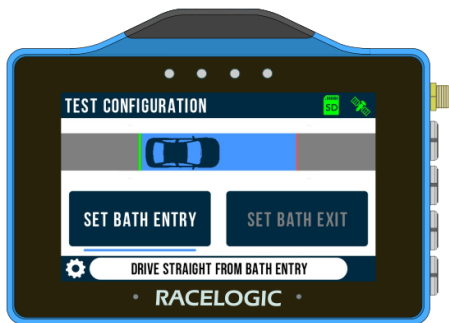
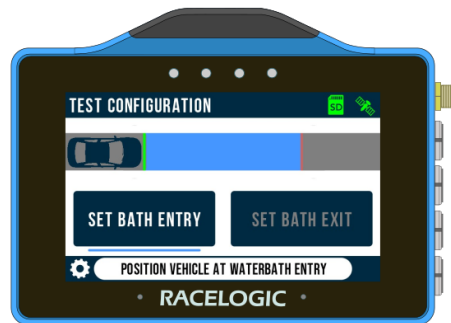
# CAN Channel Assignment



# Gate Setting



Automated process with on screen instructions  
Gates can be reconfigured or loaded (.spl file) through settings at any time



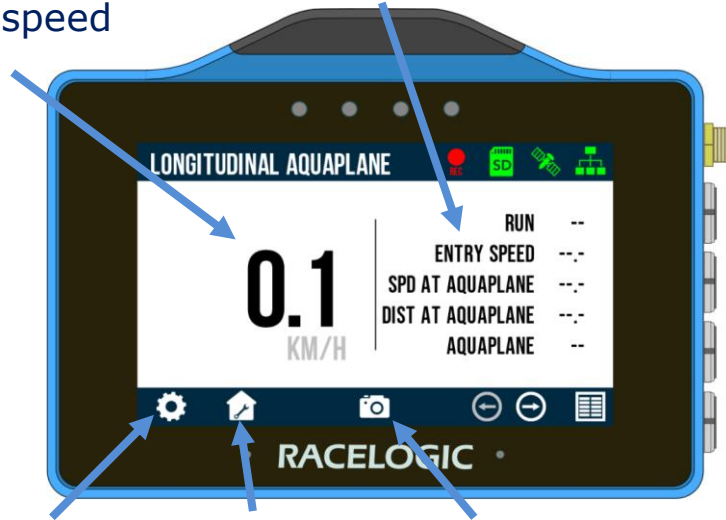
# Wheel Speed Calibration



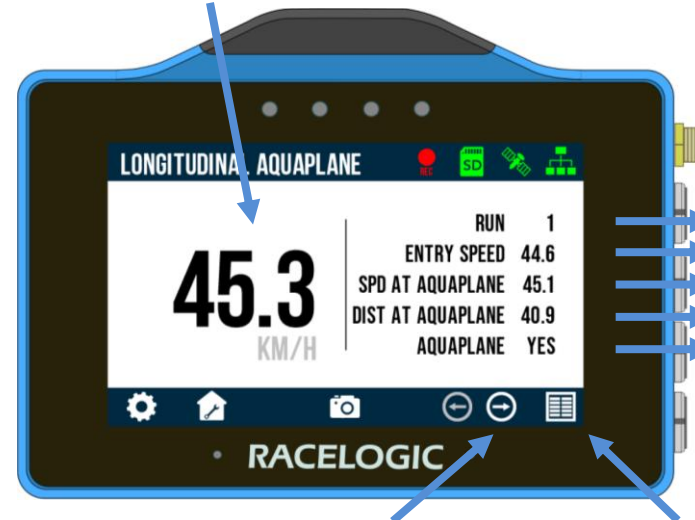
# Test Display

Run results populate  
after bath exit

Live speed



Live speed  
continuously updates



Run number  
Entry speed at gate  
Speed at aquaplane  
Distance at aquaplane  
Aquaplane Yes/No

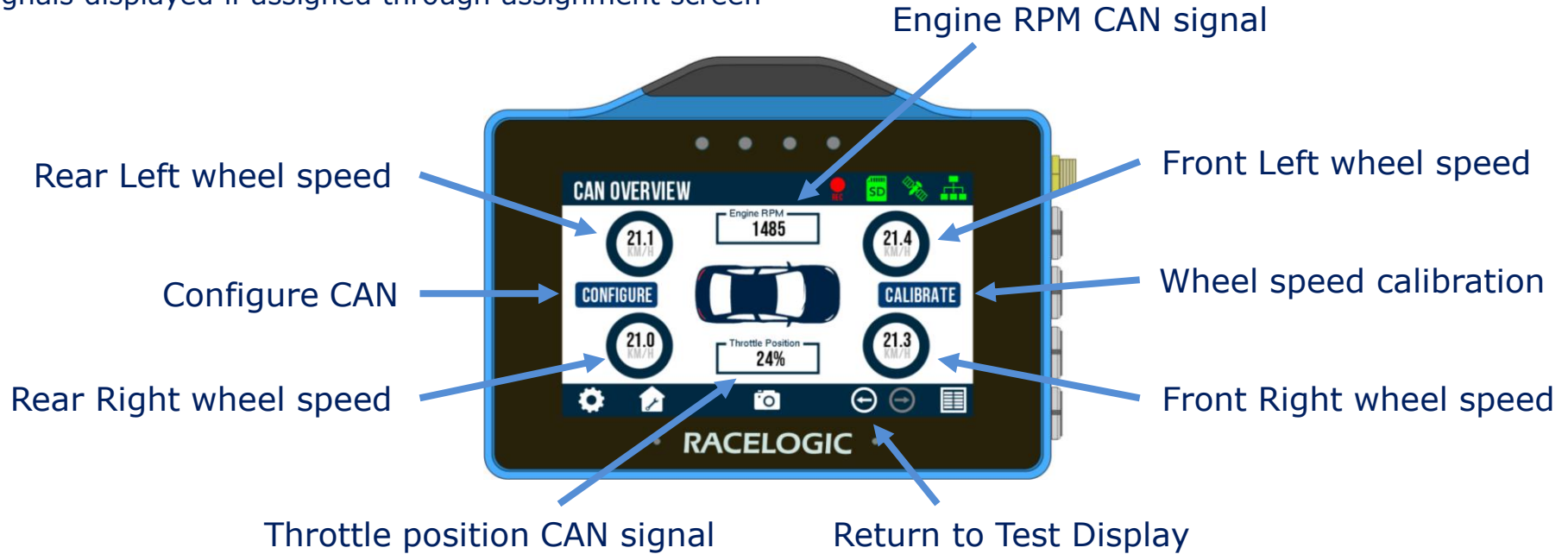
CAN overview

Results

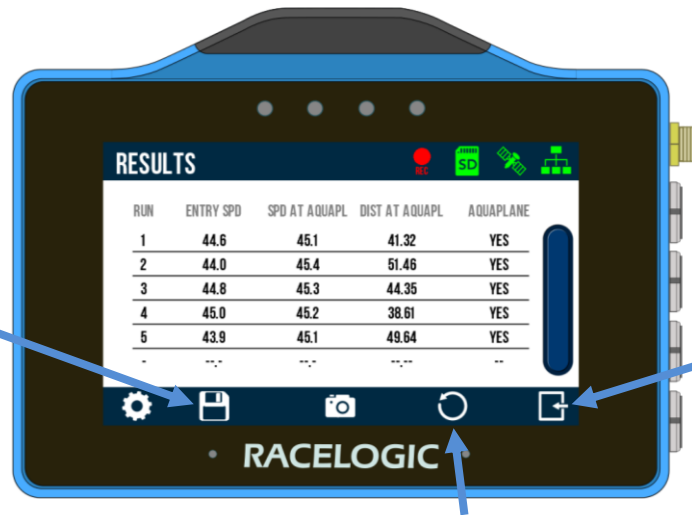


# CAN Overview (from Test Display, right arrow)

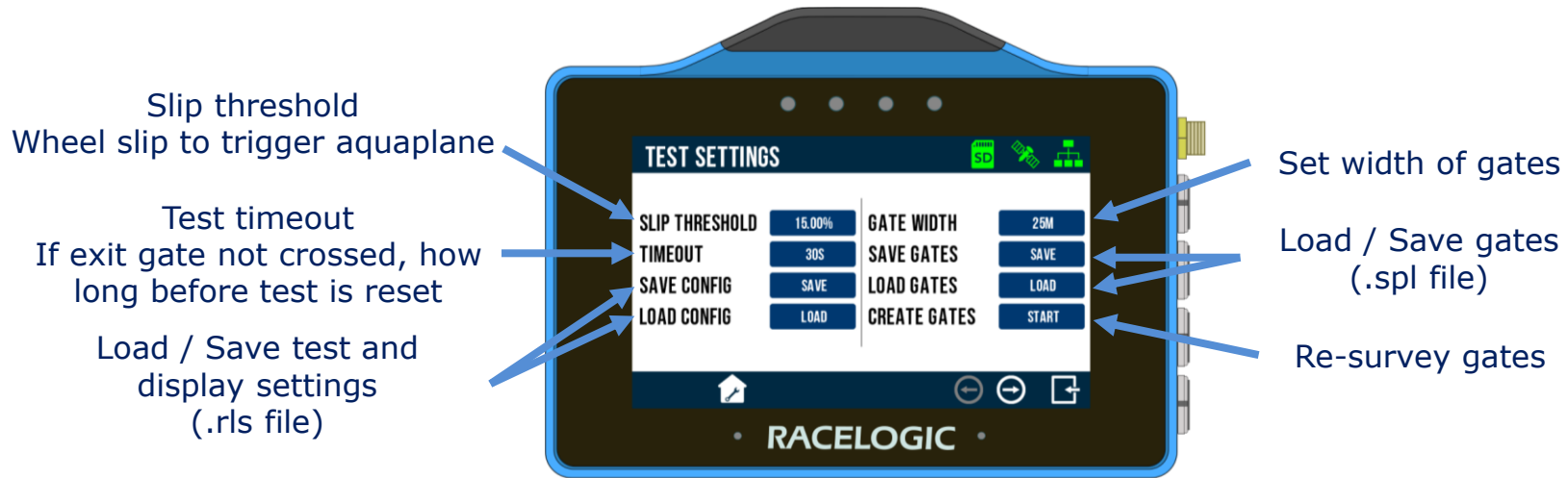
Check CAN signals are configured and received correctly  
Signals displayed if assigned through assignment screen



# Result Display



# Settings & Diagnostics 1



# Settings & Diagnostics 2

Change display and results units

Logging mode  
Continuous / only when moving

Results format (separate to vbo)  
.txt or .csv

Screen brightness

LED brightness

• RACELOGIC •

# Settings & Diagnostics 3

VBOX and app info

Cold start



# RACELOGIC

## User Guide

VBOX

# Gate setting



# Longitudinal Aquaplane Testing



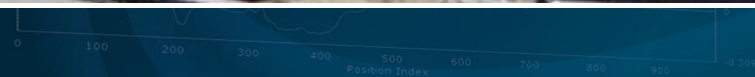
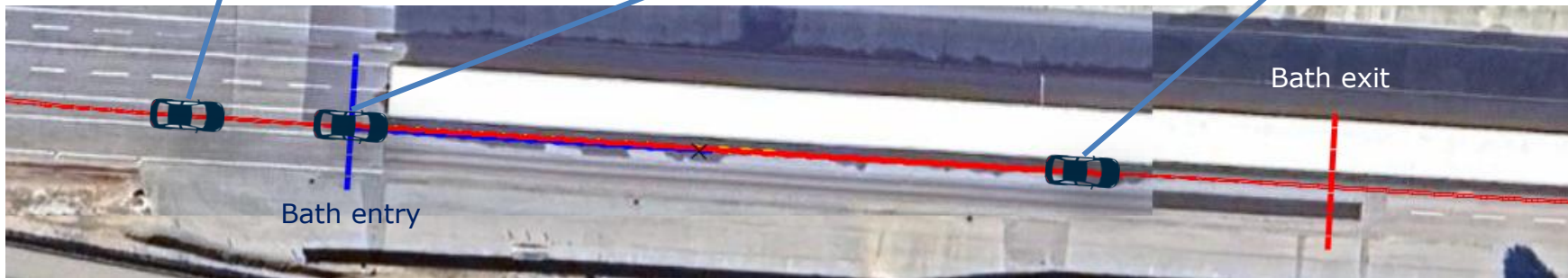
Before entry – prev. results populated  
Live speed display



LEDs hold blue from bath entry  
Run number updates  
Entry speed updates



LEDs flash green at aquaplane  
Speed and distance results populate  
Aquaplane toggle 'yes'



Run	Entry Speed	SPD at Aquaplane	DIST at Aquaplane	Aquaplane
1	44.6	45.1	40.9	YES
2	44.0	---	---	---
3	44.0	---	---	---
4	44.0	---	---	---
5	44.0	---	---	---
6	44.0	---	---	---
7	44.0	---	---	---
8	44.0	---	---	---
9	44.0	---	---	---
10	44.0	---	---	---



# Stop test



Stop logging  
Touch SD symbol



Results\_Temp\_2022\_100202\_4.xlsx

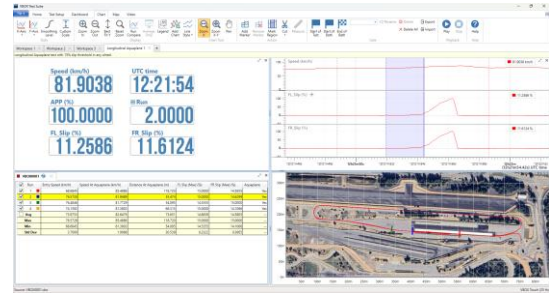


VBOX0001.vbo

	B	C	D	E
1	Entry Speed (KM/H)	Speed at Aquaplane (KM/H)	Distance at Aquaplane (M)	Did Aquaplane
2	68.7	85.5	119.62	Yes
3	76.6	82	55.41	Yes
4	76.5	81.8	54.08	Yes
5	74.2	81.4	66.38	Yes
6				

LongAqua\_Results\_1

Ready Accessibility: Unavailable



Logging must be stopped before removing power or SD card